



Thompson PectusAssist™ User Manual:
SET UP INSTRUCTIONS FOR THOMPSON PECTUSASSIST™

PectusAssist™ Set Up Instructions



 **CAUTION:** Avoid compressing the patient's body with frame components to prevent nerve damage. (Note: does not apply to compression plate for Pectus Carinatum - see step 3)

 The Thompson Retractor is provided in a non-sterile condition. Refer to Thompson Retractor IFU for cleaning, sterilization, and care instructions.

Reference the Thompson Retractor IFU for additional warnings and cautions.

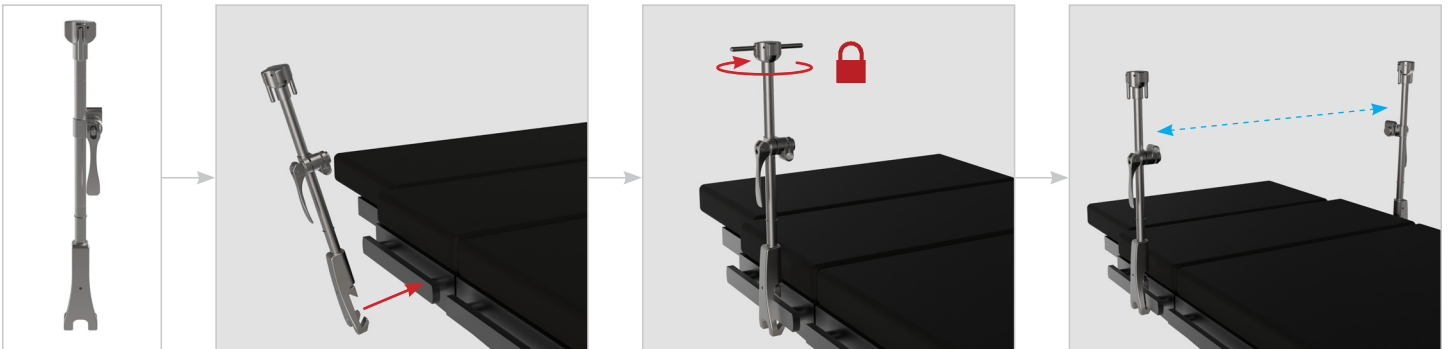
For other Thompson Retractor Systems, reference corresponding User Manual for each.

Symbol Legend:



STEP 1: RAIL CLAMPS

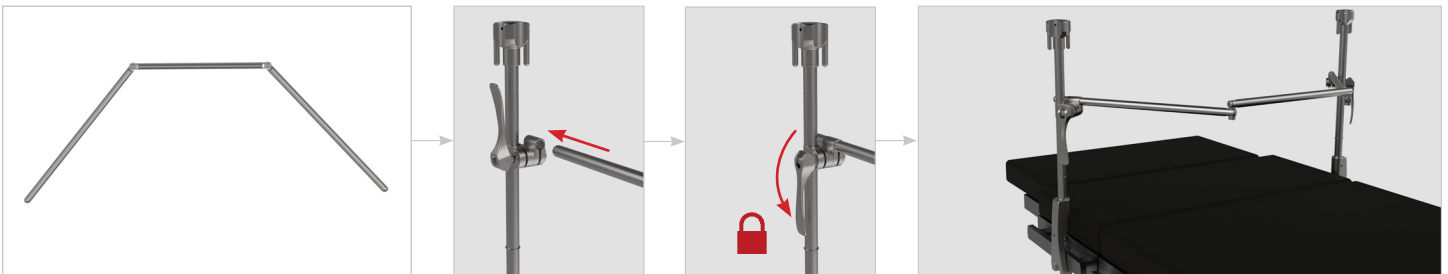
Place Elite Rail Clamp onto the bedrail over the sterile drape and turn top knob clockwise to tighten. Best positioned above the patients' shoulders. Repeat on opposite side of table to complete bilateral set up.



STEP 2: CROSSBAR

With the help of an assistant, insert each end of the bilateral crossbar into the unlocked joints on the Elite Rail Clamp, position, and flip the cam joint handle to lock.

Note: Crossbar best positioned when aligned with incision site.



PectusAssist™ Set Up Instructions (Continued)

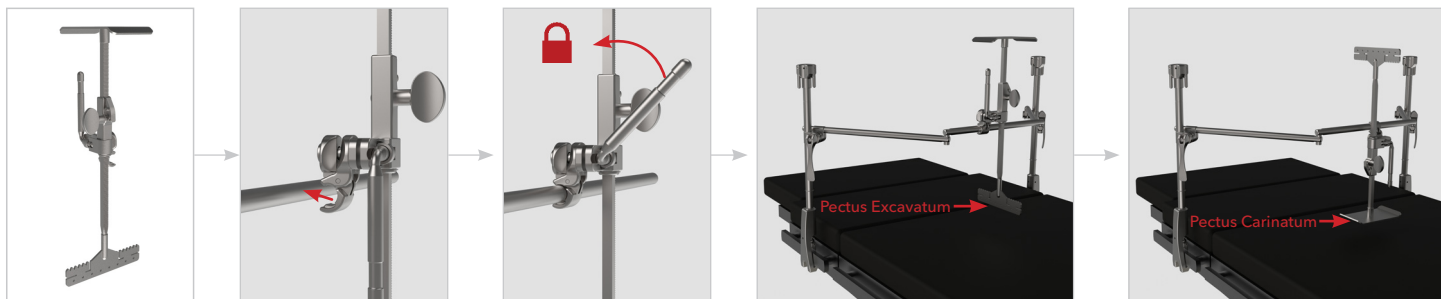
STEP 3: ATTACH PECTUSASSIST

Pectus Excavatum: Orient the PectusAssist with the lifter plate facing down*, towards the patient's chest. With joint in unlocked position, clip to frame in desired location, and flip the cam joint handle to lock.**

Pectus Carinatum: Orient the PectusAssist with the compression plate facing down, towards the patient's chest. With joint in unlocked position, clip to frame in desired location, and flip the cam joint handle to lock.

*Note: Lifter Plate best positioned 3-4 inches (Approximately 7.5-10 cm) above the patient's chest and aligned with wire.

**Note: Testing was performed with U.S.P number five wire (E.P size 7). The use of other size wire remains at the discretion of the user and at their own risk.



STEP 4: PECTUSASSIST ADJUSTMENTS

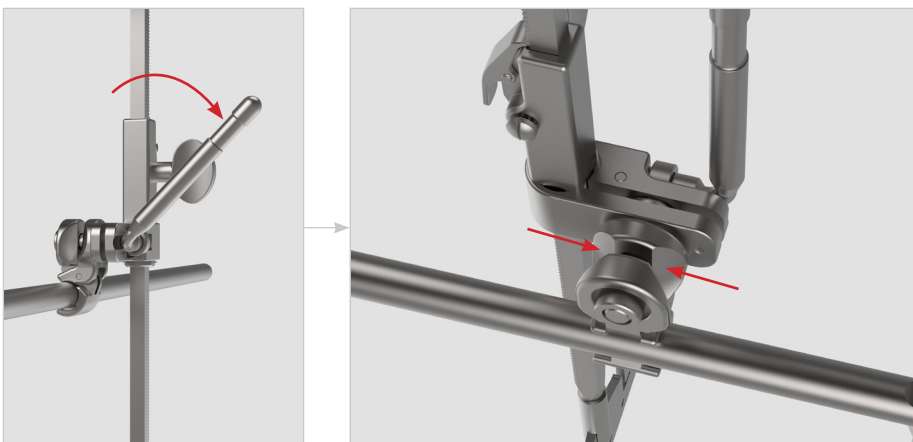
Pectus Excavatum: Raise lifter plate by turning the Micro-Adjustable knob clockwise. Release tension by pressing the pawl.

Pectus Carinatum: Lower compression plate by turning the Micro-Adjustable knob clockwise. Release compression by pressing the pawl.



To Remove:

Flip cam joint handle to unlocked position, pinch back of cam joint with thumb and index finger, and gently lift away from crossbar.



For a Free Trial Call Today*

1.800.227.7543

Rev A
061823
dc tpaum



Uncompromised Exposure™

VISIT US ONLINE: THOMPSONRETRACTOR.COM



Thompson
SURGICAL INSTRUMENTS

10341 East Cherry Bend Road
Traverse City, Michigan 49684
phone: 231.922.0177
fax: 231.922.0174
thompsonretractor.com

EC REP

Emergo Europe

Westervoortsedijk 60
6827 AT Arnhem
THE NETHERLANDS

* Free trial valid for U.S. customers only. Customers outside U.S. please call +1-231-922-0177 for availability.

© 2022 Thompson Surgical Instruments, Inc. Printed in the U.S.A.

* S-Lock® and the "T Circle" logomark are Registered Trademarks of Thompson Surgical Instruments, Inc.
Patents: trpat.com

Note: As we continually strive to provide the best products possible, some of the images in this document may appear slightly different from the product received.

CE 0297

Made In
USA