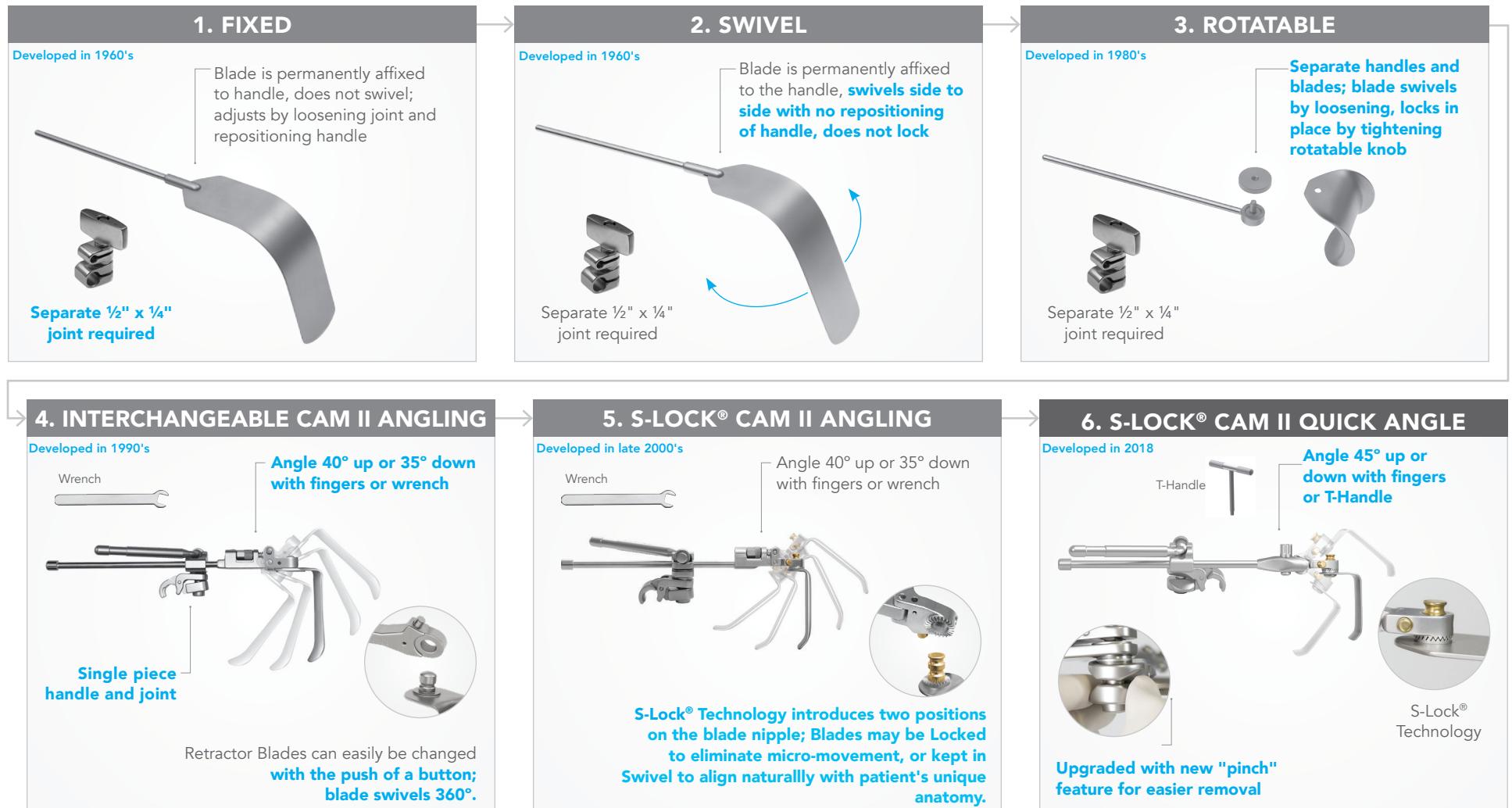


Evolution of Handles and Blades

Thompson handles and blades have evolved over the years through the generations shown below, to the latest technology, S-Lock® Quick Angle Cam II Handles.

Features in **blue** are updates from the previous version:

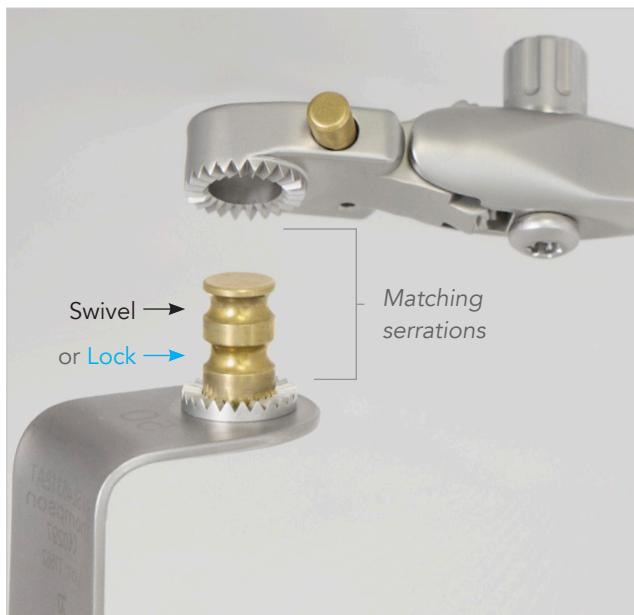



Note: Interchangeable Blades connect to Interchangeable Handles, which are identified by the Silver Nipple and Silver Plunger.

Note: S-Lock Blades connect to S-Lock Handles, which are identified by the Gold Nipple and Gold Plunger.

S-Lock® Technology

Thompson's patented S-Lock Technology allows retractor blades the ability to be Locked into position eliminating any micro-movement, OR in the Swivel position in order to naturally align with each patient's anatomy. Here's what you need to know:



- 
BLADE AND HANDLE
CONTAIN MATCHING SERRATIONS
- 
SWIVELS 360°
- 
LOCKS IN PLACE FOR
PRECISE RETRACTION
- 
GOLD NIPPLE + PLUNGER COLOR

Compatibility

HANDLES & BLADES:

S-Lock® Handle are not compatible with older generation styles, such as Interchangeable, Rotatable or Fixed Blades. We recommend standardizing your sets to one style.

Compatible



Incompatible



FRAME COMPONENTS:

Frame Components consist of inter-connecting, 1/2" in diameter parts, such as Rail Clamps, Rods, Angled Arms, and Joints. All handle and blade instruments are cross-compatible with 1/2" Frame Components.



For a Free Trial Call **1-800-227-7543** or visit us online: thompsonretractor.com *

* Free trial valid for U.S. customers only. Customers outside the U.S.A., please call +1-231-922-0177 for availability.

© 2024 Thompson Surgical Instruments, Inc. Traverse City, Michigan.

© S-Lock®, PLA®, and the "T Circle" logomark are Registered Trademarks of Thompson Surgical Instruments, Inc.

Rev D
050624
hbevo

Made In
USA