

“Thompson’s Anterior Lumbar Ring System provides a simple, safe, and intuitive platform to achieve consistent midline spine exposure using minimal incision size while affording maximal exposure of the anterior spine.”

- Jonathan E. Schoeff, MD, FACS



Uncompromised Exposure™ for ALIF Access with the **Thompson AL Ring Retractor System**

Anterior Lumbar Spine Access

The versatile Thompson Anterior Lumbar Ring System allows for quick, secure placement of the handles around the surgical site while providing the surgeon with an unobstructed view of the working area.

Surgeons familiar with a ring style frame will find the AL Ring System incredibly intuitive, functioning similarly to other rings but with marked improvements.

Sterile Table Mount

Mounts and adjusts within the sterile field.



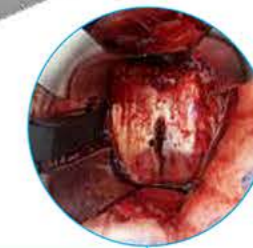
Circle Joints

Low profile joints provide strong, secure attachment for retractors.



Dual Angle Handle

Provides tactile blade placement (1), as well as additional micro-adjustments (2).



Strong, Radiolucent Blades

Superior strength prevents excessive flexing under heavy retraction.

Photo courtesy Dr. Jonathan Schoeff, MD, FACS

Anterior Lumbar Ring System Handles

Dual Angle Handle 8"

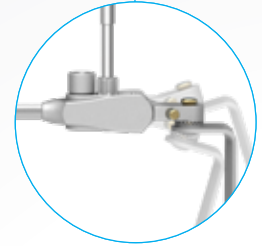
Provides tactile blade placement, as well as additional micro-adjustments, with the use of included Hex Tool.

#SL42101

Available as one-piece Clip-on Handles



#SL42126WDP: Clip-on Dual Angle 8"



Quick Angle micro-adjustments

Free Angle Handle 8"

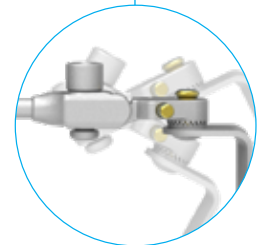
Provides tactile blade placement, with the use of included Hex Tool.

#SL42102

Available as one-piece Clip-on Handles



#SL42126WFP: Clip-on Free Angle 8"



Tactile blade positioning



S-Lock® Technology

Provides the ability for blades to swivel 360° or lock securely in place, in any orientation.



Hex Tool

One tool for blade placement and ring frame assembly.

#60021



Circle Joint

#42100

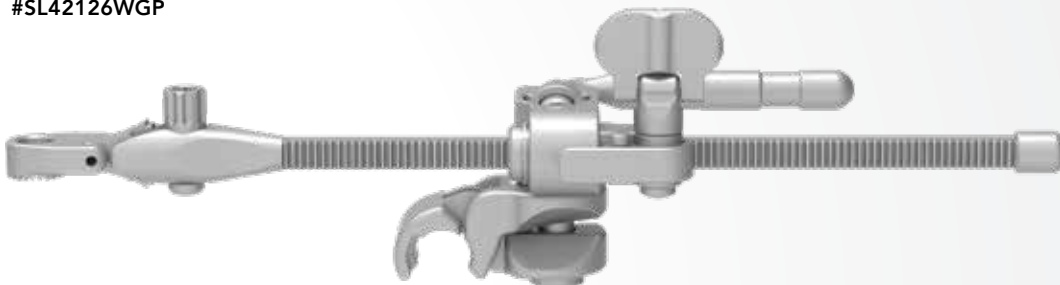
Anterior Lumbar Ring System Handles [CONTINUED]



Cam II Clip-On Quick Angle 8"

One piece handle & joint that provides tactile blade placement and quick attachment to frame.

#SL42126WGP



Mini Micro-Adjustable II Clip-On Quick Angle 9"

One piece handle & joint that provides incremental, strong retraction and quick attachment to frame

#SL45011CGP



T-Handle

Tool used for utilizing the Quick Angle mechanism on Clip-On Handles. Tow the blade in and out 45 degrees.

#60020

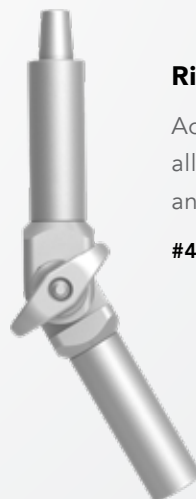
Anterior Lumbar Ring System Ring Extensions



Ring Extension 4"

Addition of extensions allow for the creation of an oval shape and further reach.

#44223



Ring Extension Hinged 4"

Addition of hinged extensions allows for multi-planar retraction and versatile positioning.

#44229

Anterior Lumbar Ring System Blades

Thompson offers strong, radiolucent blades that prevent excessive flexing under heavy retractor.



Radiolucent Short Neck Renal Vein

Rigid vessel retraction.

25mm wide
80mm - 200mm depths
10mm increments

30mm x 60mm Radiolucent Renal Vein Blade
 available, call or visit us online for information.



Radiolucent Richardson

Abdominal wall retraction for procedures requiring a larger incision.

50mm wide
40mm - 250mm depths
10mm increments



Radiolucent Advanced MIS 18mm Renal Vein

Rigid, low profile MIS vessel retraction.

18mm wide
80mm - 200mm depths
10mm increments



Radiolucent Advanced MIS Reverse Tapered

Maintains MIS incision size, while providing additional retraction width at the distal end.

18mm wide (proximal end)
20mm wide (distal end)
100mm - 200mm depths
10mm increments



Radiolucent Advanced MIS Fine Vessel

Fine vessel retraction, specially designed for 'advanced MIS' users.

9mm wide (proximal end)
12mm wide (distal end)
80mm - 200mm depths
10mm increments

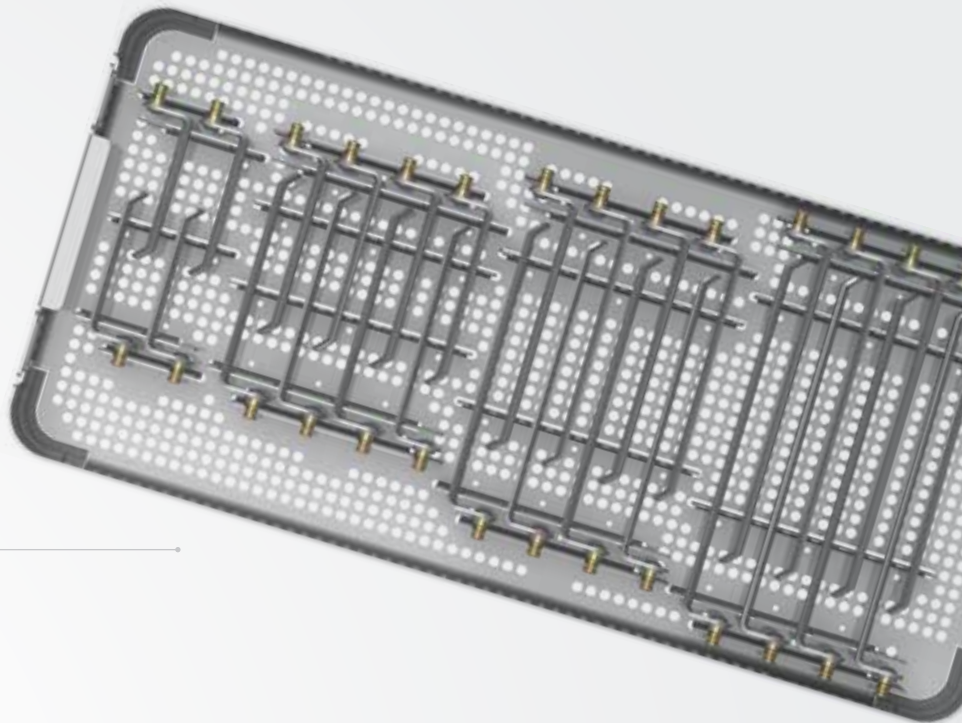
NOT intended for use as a stand alone blade.

NOT indicated for vessel mobilization.

Uncompromised Exposure™

Accessories

Thompson Retractor offers a wide variety of accessory items to compliment your Anterior Lumbar retractor system of choice.



Organized Blade Trays



S-Lock® Hand Held Adapter



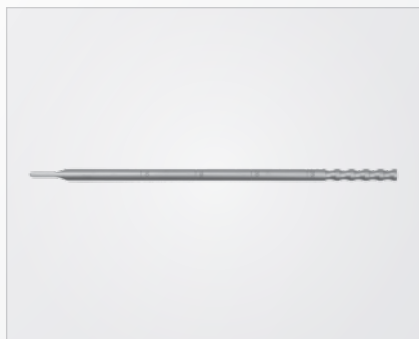
Lite Wand



Suction for Anterior Lumbar Surgery (SALS)



Rail Extender



Depth Gauge



Jackson Frame Adapter

For a Free Trial Call Today*

1.800.227.7543

Rev C
020223
mg alrsg



Uncompromised Exposure™

VISIT US ONLINE: **THOMPSONSURGICAL.COM**

CONTACT

Address

Thompson Surgical Instruments, Inc.
10341 E Cherry Bend Rd.
Traverse City, MI 49684
USA

Phone + Fax

Toll Free 1-800-227-7543
Phone 231-922-0177
Fax 231-922-0174

Online

Email contact@thompsonsurgical.com
Website www.thompsonsurgical.com

Social



Thompson
SURGICAL INSTRUMENTS

Made In
USA

* Free trial valid for U.S. customers only. Customers outside the U.S.A., please call +1-231-922-0177 for availability.

© 2021 Thompson Surgical Instruments, Inc. Printed in U.S.A.

© S-Lock®, PLA®, and the "T Circle" logomark are Registered Trademarks of Thompson Surgical Instruments, Inc.
Patents: trpat.com

Note: As we continually strive to provide the best products possible, some of the images in this document may appear slightly different from the product received.