

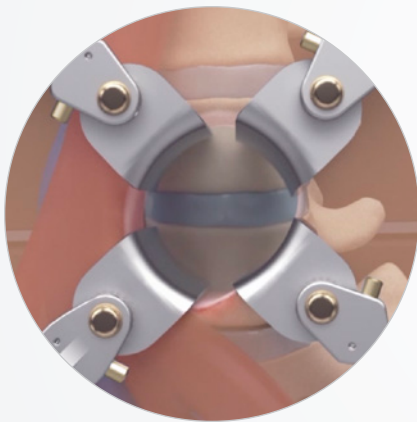
Photo courtesy Jonathan E. Schoeff, MD, FACS

"In every way, shape, and form, Thompson Retractors are superior."

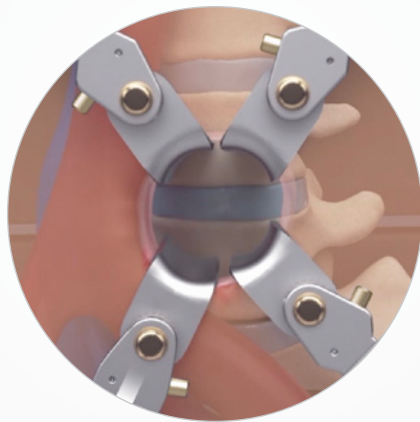
- Jonathan E. Schoeff, MD, FACS

Advanced MIS Anterior Lumbar Access Blades

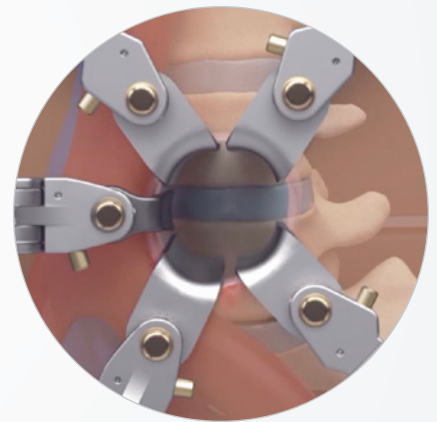
18mm wide Advanced MIS ALIF Access blades allow for a smaller incision, while also allowing for additional working area for the spine procedure, when compared to standard 25mm width blades.



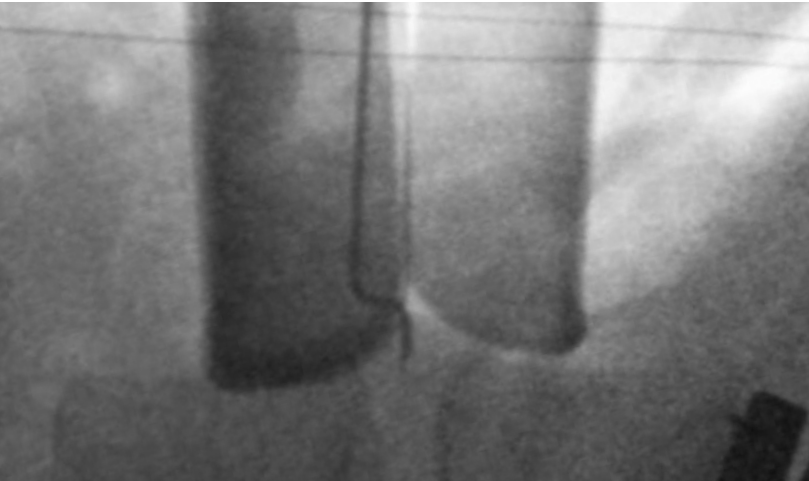
Standard 25mm width blades



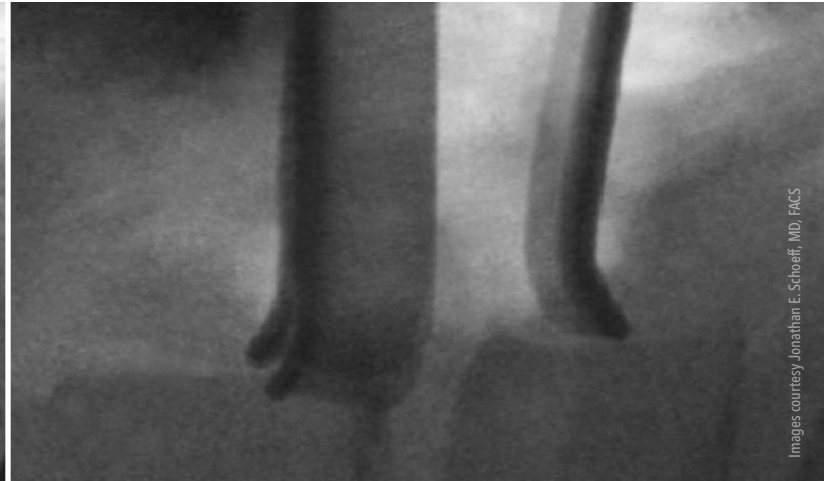
NEW Advanced MIS 18mm width



NEW Advanced MIS + Fine Vessel



Standard 25mm width blades



NEW Advanced MIS 18mm width

Images courtesy Jonathan E. Schoeff, MD, FACS



**Radiolucent
Advanced MIS
18mm Renal Vein**

Rigid, low profile MIS vessel retraction.

**18mm wide
80mm - 200mm depths
10mm increments**



**Radiolucent
Advanced MIS
Reverse Tapered**

Maintains MIS incision size, while providing additional retraction width at the distal end.

**18mm wide (proximal end)
20mm wide (distal end)
100mm - 200mm depths
10mm increments**



**Radiolucent Advanced
MIS Fine Vessel**

Fine vessel retraction, specially designed for 'advanced MIS' users.

**9mm wide (proximal end)
12mm wide (distal end)
80mm - 200mm depths
10mm increments**

NOT intended for use as a stand alone blade.

NOT indicated for vessel mobilization.

Note: Some sizes may require a longer lead time. Call for information.




Visit us online: thompsonsurgical.com

For a Free Trial Call **1-800-227-7543** *

* Free trial valid for U.S. customers only. Customers outside the U.S.A., please call +1-231-922-0177 for availability.

© 2020 Thompson Surgical Instruments, Inc.

® S-Lock®, PLA®, and the "T Circle" logomark  are Registered Trademarks of Thompson Surgical Instruments, Inc.
Patents: tpat.com

Rev A
062220
misalss

